

National Park Service

South Florida Natural Resources Center



Evaluation of vegetation data as a management tool in Everglades National Park

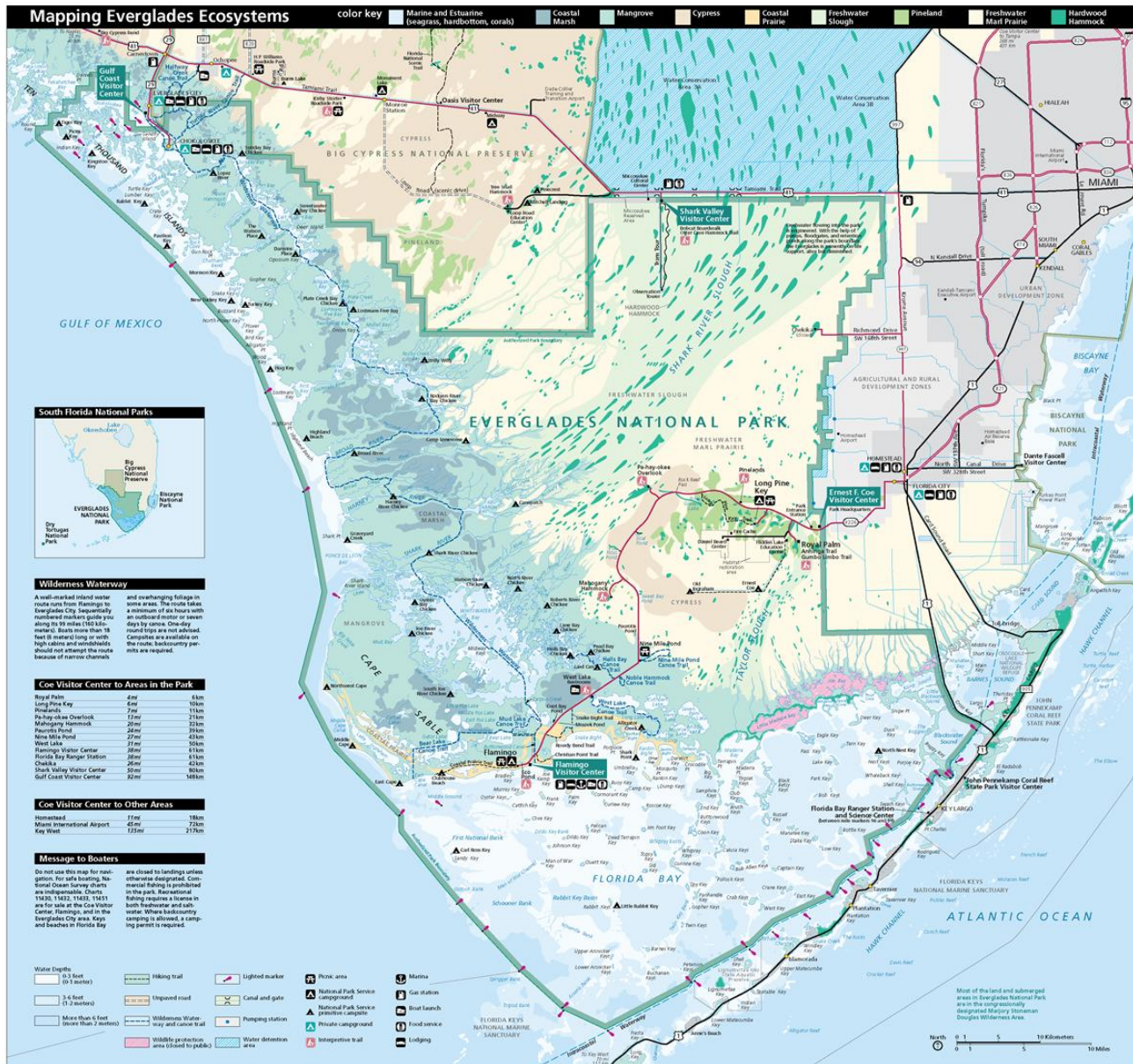
Jimi Sadle
Botanist
Everglades National Park

EXPERIENCE
YOUR
AMERICA



National Park Service

South Florida Natural Resources Center



EXPERIENCE
YOUR
AMERICA

National Park Service

South Florida Natural Resources Center



EXPERIENCE
YOUR
AMERICA



National Park Service

South Florida Natural Resources Center



EXPERIENCE
YOUR
AMERICA



National Park Service

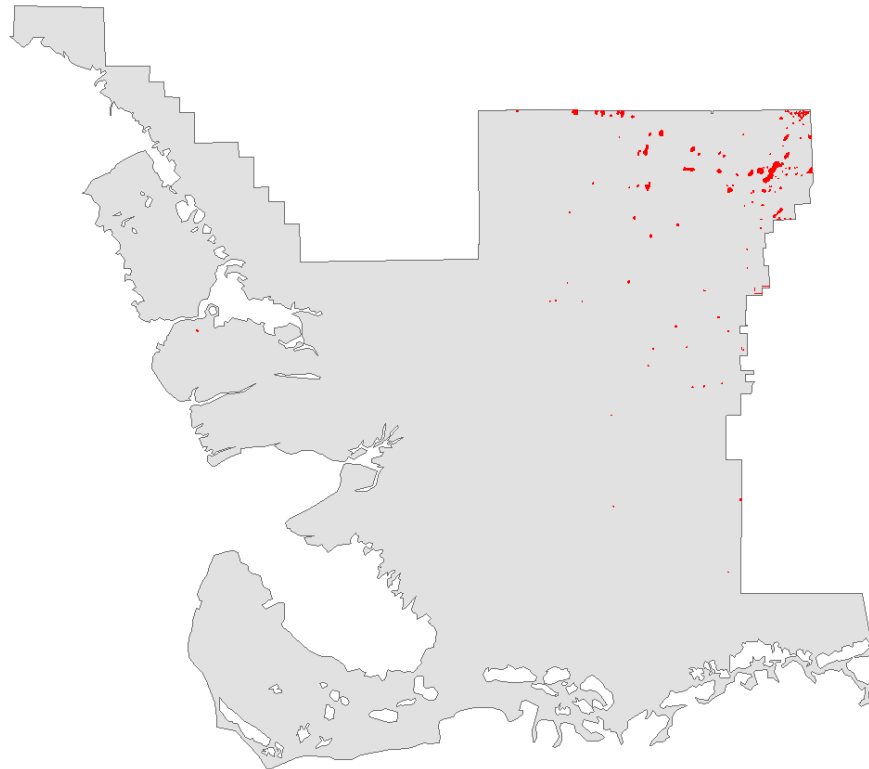
South Florida Natural Resources Center



EXPERIENCE
YOUR
AMERICA

National Park Service

South Florida Natural Resources Center



EXPERIENCE
YOUR
AMERICA



National Park Service

South Florida Natural Resources Center



EXPERIENCE
YOUR
AMERICA

National Park Service

South Florida Natural Resources Center



EXPERIENCE
YOUR
AMERICA

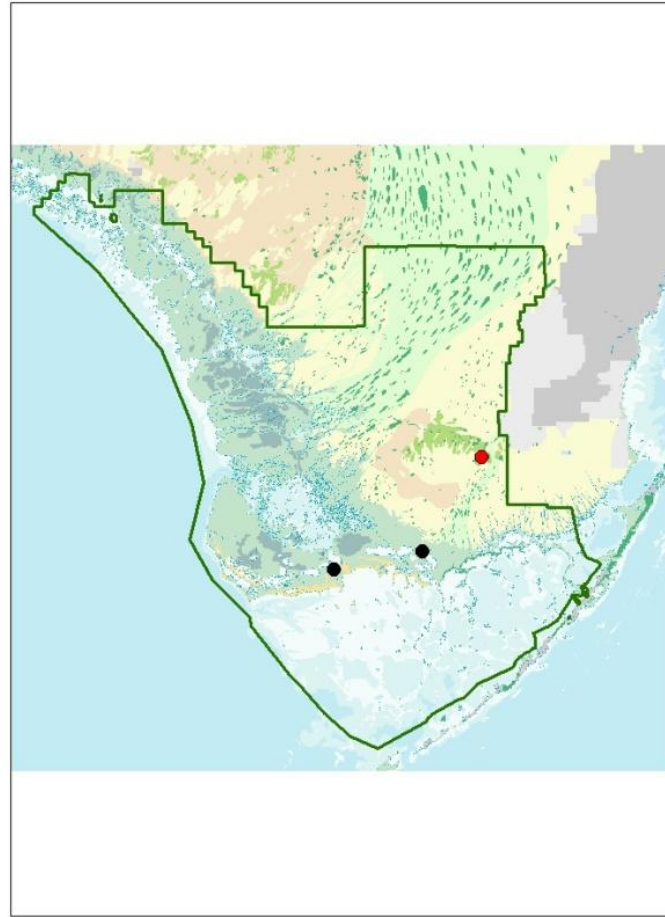


National Park Service

South Florida Natural Resources Center



EXPERIENCE
YOUR
AMERICA



National Park Service

South Florida Natural Resources Center



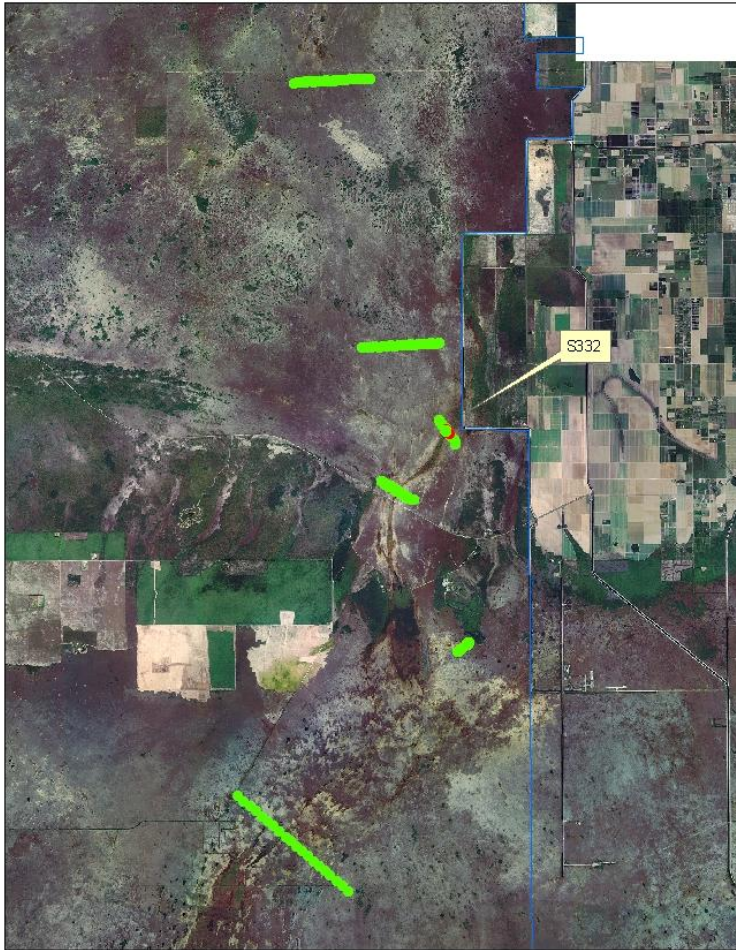
EXPERIENCE
YOUR
AMERICA

National Park Service

South Florida Natural Resources Center



EXPERIENCE
YOUR
AMERICA

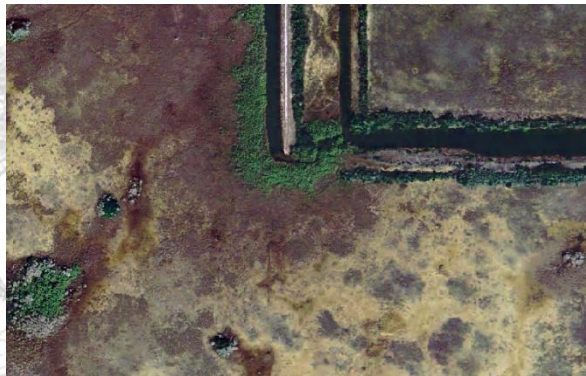
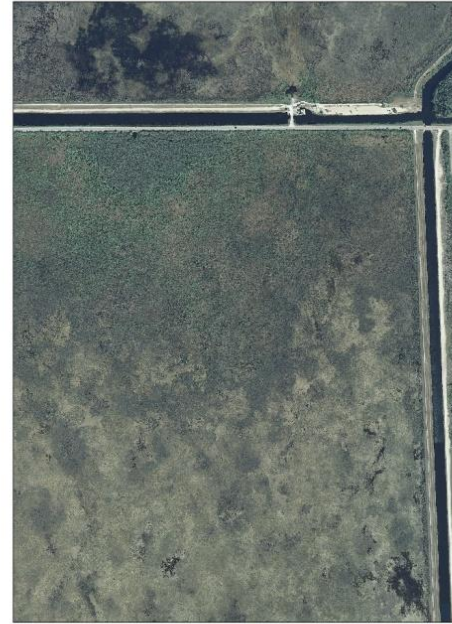


Legend

- Plots without cattail
- Plots with cattail

National Park Service

South Florida Natural Resources Center



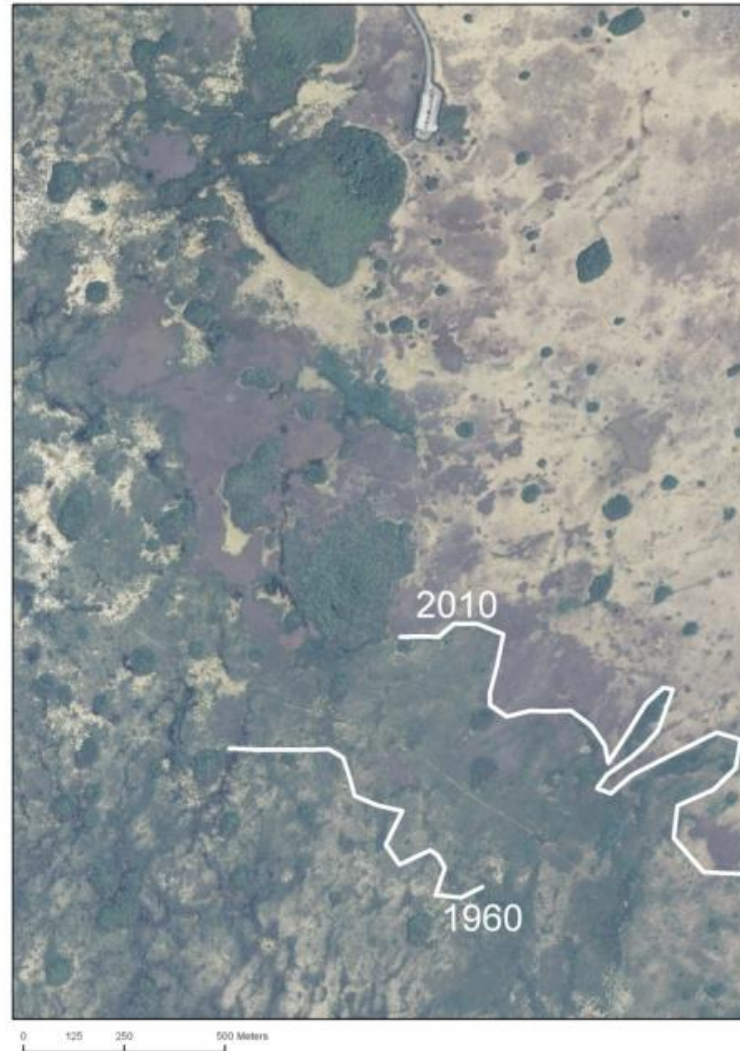
EXPERIENCE
YOUR
AMERICA

National Park Service

South Florida Natural Resources Center



EXPERIENCE
YOUR
AMERICA



National Park Service

South Florida Natural Resources Center

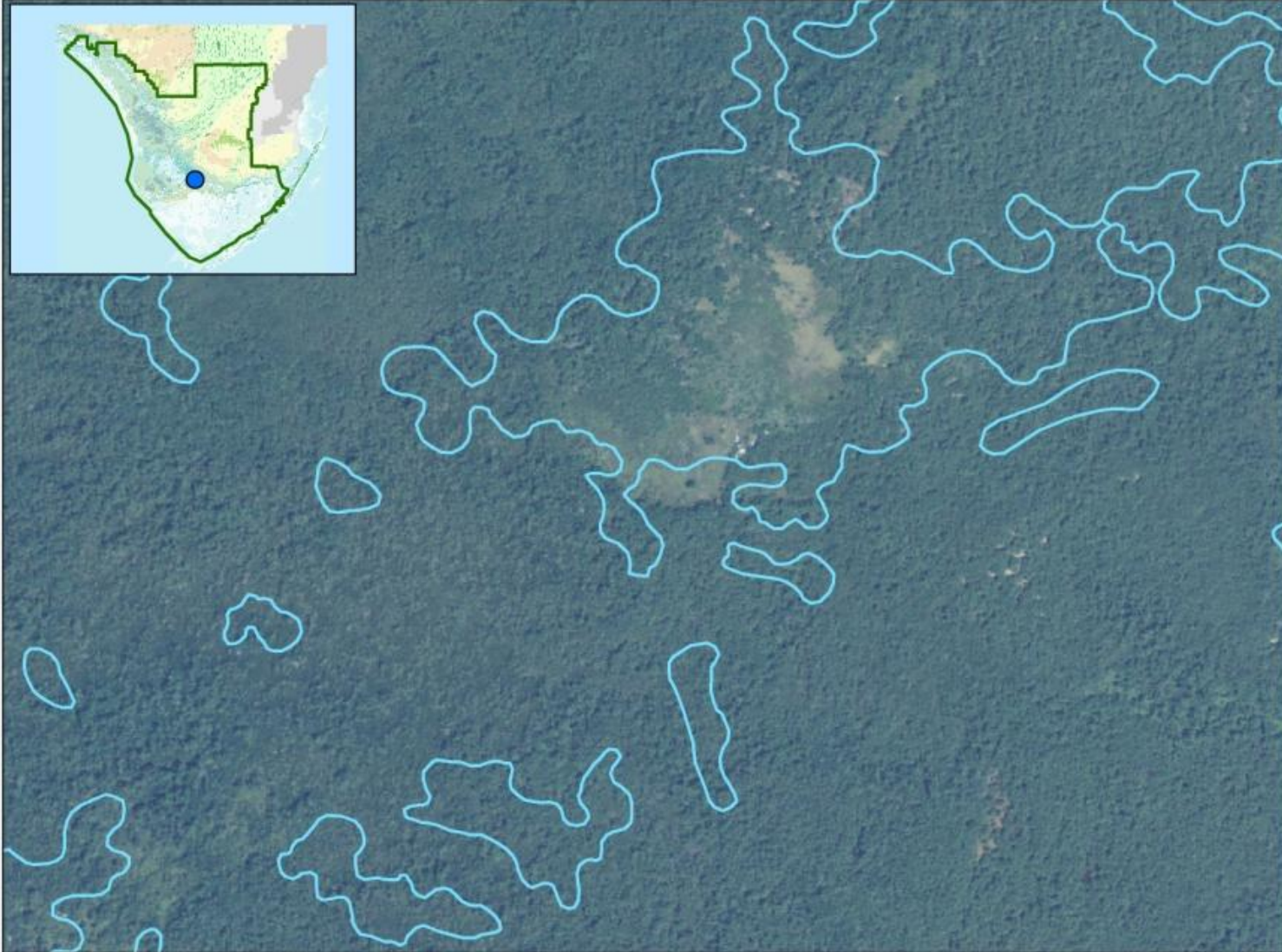


EXPERIENCE
YOUR
AMERICA



National Park Service

South Florida Natural Resources Center



EXPERIENCE
YOUR
AMERICA

National Park Service

South Florida Natural Resources Center



EXPERIENCE
YOUR
AMERICA